

SEASQUIRTS

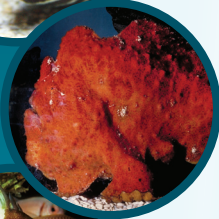
How do these fishes find their food?

Match the fish to its eating habit!



..... Zebra (a)
Moray Eel

(1) Scrapes food from rocks with strong front teeth.



..... Frogfish (b)

(2) Spits water at insects to knock them out of trees.



..... Bearded (c)
Armorhead

(3) Uses whisker-like barbels to find food.



..... Dragon (d)
Moray Eel

(4) Slurps up small shrimp with a long snout.



..... Archerfish (e)

(5) Uses a lure to attract small fish.



..... Goatfish (f)

(6) Catches slippery fish with its sharp pointed teeth.



..... Seahorse (g)

(7) Crushes prey with flattened teeth.



..... Stripebelly (h)
Pufferfish

(8) Uses its whiskers for finding brittlestars to eat.

Come watch these residents of the Waikiki Aquarium eat their lunch!